



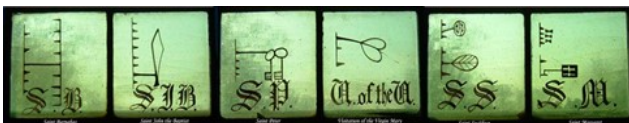
To the left, through the archway at the end of the choir stalls is the **Lady Chapel (12)**, originally the Morning Chapel of the Mitchell family, who entered by a private door.

Behind the Choir Stalls, on the south side, you will see the **Organ (13)**, built by Lewis & Co. of London and displayed at the Newcastle Exhibition of 1887, along with the **Altar**, before being installed in the Church.

If you now turn to face the back of the Church, you will see the restored **West Window**, depicting the Last Judgement. Beneath it is the intricately-carved screen of Caen marble, cleaned by hand by parishioners with toothbrushes in 2011.

Making your way westwards to the **South Aisle (14)** you will see first the **Lynemouth Crucifixion**, gifted by the PCC of St. Aidan's Lynemouth and painted by the Newcastle artist T.W. Pattinson in the 1920s.

Next, you will notice that the windows depict a **Clog Calendar**. In the Middle Ages, the feast



days of the Christian Year were represented for those who could not read, by carvings on a 4-sided log. Some images, such as St. Peter (4th window, 3rd picture above) are easy to understand: many are more elusive.

Before you leave, you might like to pause and sit on one of the pews, built from single lengths of the finest oak Mitchell could command. There, you might notice a metal carrier under the pew in front, from which the ingenious Victorians suspended their top hats!

We hope that you have enjoyed your visit. Do please sign our Visitors' Book and if you would like to support our efforts to maintain St. George's to the highest level, please consider joining **The Friends of St. George's**.

Pick up an application form from the back of church, or contact us:

e-mail: office@stgeorgesjesmond.org.uk
 phone: 0191 281 1659 (9.45am-12.45pm)
 website: www.stgeorgesjesmond.org.uk
 Facebook: StGeorge's Church Jesmond
 Twitter: @StGeorgeJesmond

Alternatively, why not join us for worship, when you will experience the building in action?

Sunday Services

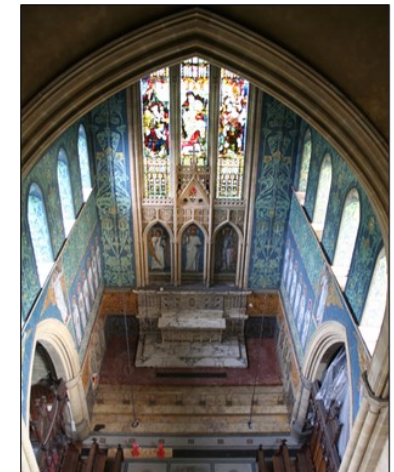
Holy Communion	8.00 am
Parish Eucharist	9.30 am
Holy Communion (BCP)	11.30 am, 1st Sunday
Taizé Service	6.00 pm, 2nd Sunday
Choral Evensong	6.00 pm, 3rd Sunday

May God's Peace be with you

St. George's Church Jesmond

A Short Guide

In 1880, the Rev. Pennefather of Clayton Memorial Church and Charles Mitchell, his richest parishioner and ship owner, agreed that a church at the north



end of Jesmond was needed. Mitchell offered to pay for the finest design and building materials that his wealth could command.

The resulting Grade 1 listed church was consecrated in October 1888, with its huge tower echoing the campanile on St. Mark's Venice, dominating the Jesmond skyline.

The inside was restored in 2011 (West Window) and 2013, when the stone work and the mosaics were cleaned and the new lighting installed.



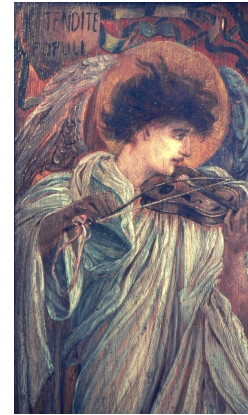
As you go in through the **SW door (1)**, you will see the scale of the building, not unlike a small cathedral. The church is 19m high and 207m wide, with a **Nave** of 280m and a **Chancel (8)** stretching a further 11.5m.

The mosaic floor is decorated with many recurring Christian symbols. For example, as you walk under the **West Window** in the **Baptistry (2)**, look on the floor for the fish symbols of the early Church.



This is the first detached Baptistry in the Diocese. Its **Font (3)** of alabaster, standing on columns of onyx, has lost its original iron and copper cover.

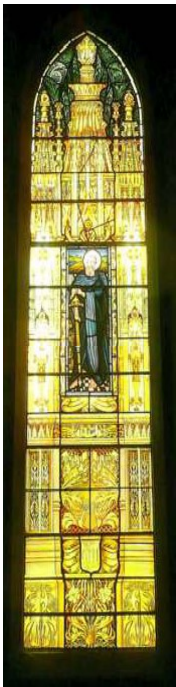
Straight ahead is **St. Oswald's Altar**. The **Crucifix** over the Altar was rescued during the 1st World War from a battlefield in France, where it is believed to have been a roadside **Calvary**.



To the right is the massive oak **Pulpit (7)**, carved by Ralph Hedley, whose work can be seen in the choir stalls and screen in St. Nicholas's Cathedral.



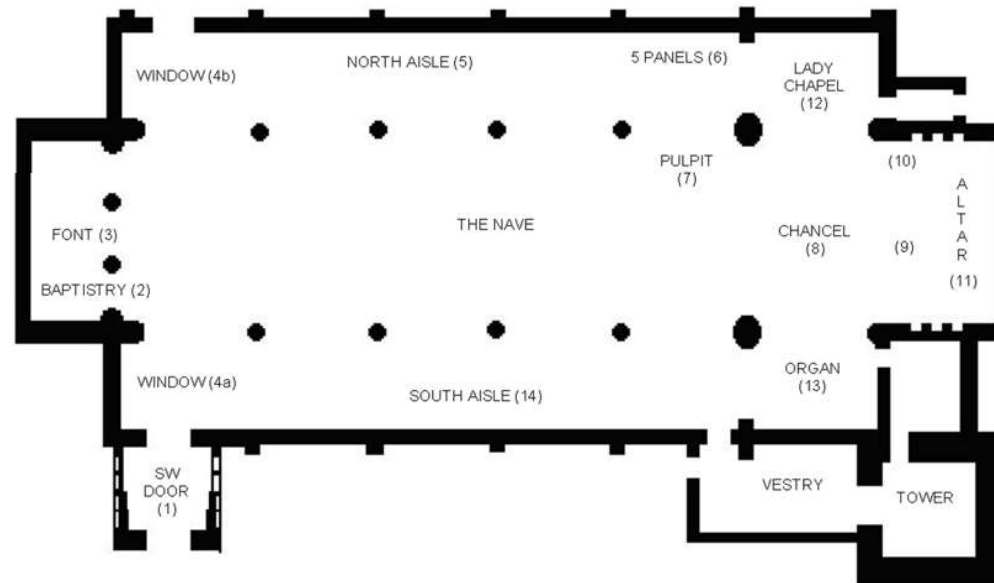
As you make your way into the **Chancel (8)**, look on the floor for the olive branch, peacock, fishes, crown, lily and hart of Christian iconography, and high on the walls of the **Sanctuary (9)**, the Apostles, with St. Matthias replacing Judas, first left on the North Side. Each bears an instrument reflecting his life or death **(10)**.



The two **Painted windows** flanking the Baptistry are of St. Paul **(4a)** and St. Barnabas **(4b)** and are by T.R. Spence. If you look at the bottom, you will see the pre-Raphaelite influence.

Making your way along the **North Aisle (5)**, you will pass the **War Memorial** to the dead of the 1st World War: one of the names might surprise you!

Walking on, you will come to the **5 painted panels (6)** on the wall by T.R. Spence and will notice the same pre-Raphaelite influence apparent in the Baptistry windows.



Towering over the **High Altar (11)**, which was carved from a solid block of pavanozza marble, is the great **East Window**.

It depicts the Nativity and the Visitation of the Kings (left) and Shepherds (right) in dramatic contrast to the Last Judgement of the **West Window**.

