



St. George's Community Hub



Fundraising Campaign

A Shared Space in the Heart of Jesmond



The Green at the Big
Friendly Gathering

Fundraising campaign for a Community Hub in Jesmond

A message from the Reverend Canon Brian Hurst



For over 130 years the church of St George's, which is much loved locally, with its fine listed buildings and wonderful green space, has a long history of dedicated service to local people – on intimate family occasions, community festivities and national occasions.

Yet, I am conscious of how the needs of this diverse neighbourhood will have changed over these years, and as we plan for the future, we seek to be open to the hopes and dreams of the community in which we are set.

As part of this developing vision, St George's engaged in a listening exercise in which we consulted with residents, groups, and businesses.

This showed clearly that what the area now needs more than anything are shared, safe spaces at its heart, ensuring the well-being of all its people. We heard that such modern spaces would be welcome and be used for a wide range of events, inclusive of people of all ages and abilities, of all faiths and none.

A five-year plan to develop St George's facilities and to offer them for fuller community use provides up-to-date-facilities for activities, meetings, concerts, and exhibitions.

The church and the hall are Listed Buildings, and we have taken care to preserve all the key heritage features. We commissioned a leading firm of conservation architects whose plans have gained all necessary planning permissions, including a small extension to the church with toilets, servery, and a quiet meeting space.

In this brochure you will find an outline of these plans, the estimated costs and a projected timeline.

We are hugely grateful for your interest in this exciting project, and hope that you will contribute to their outworking with your knowledge, support, and encouragement.

I commend the work to you,

Brian Hurst



Children from Percy
Hedley School turn on the
Christmas Tree lights



The Tuesday Group
take a break!

Design Principles

The Themes emerging from our community listening process entailed the need for:

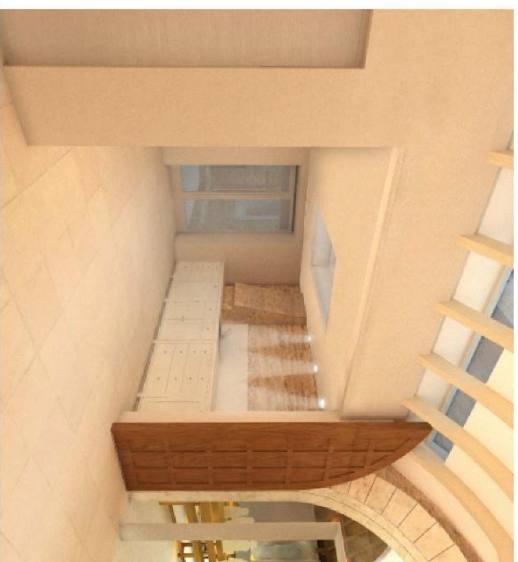
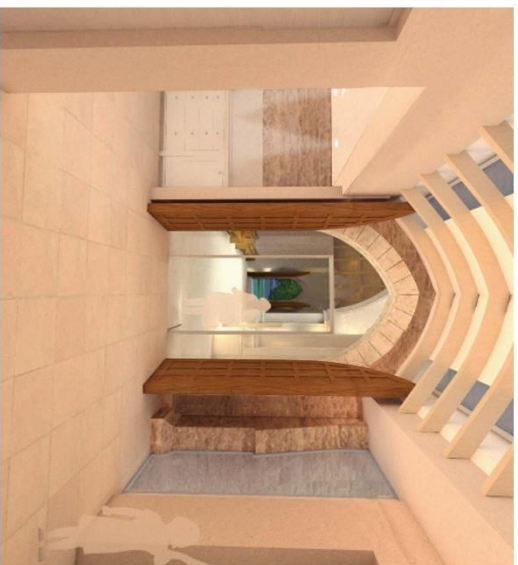
- A community focal point
- A meeting place for social groups
- Space to support local elderly people
- Space to support those in need
- Space and activities for children, the young and families

The **Vision** that emerged is of a **Community Hub** offering **a shared space in the heart of Jesmond.**

- It will be inclusive of all.
- Designed and priced to be used by all.
- It will be safe and welcoming to people of all faiths or none, to all ages, all genders, all races and all abilities.
- It will allow flexibility of function, maximising the range of activities supported.
- It will be eco-friendly.
- It will be staffed appropriately.
- And designed with safeguarding for children and vulnerable adults in mind.

The Community Hub includes the Hall, the Church and the Green.

Artist's Views of Church Extension



St George's Church, Jesmond

Simpson and Brown

Description of Works

To make the three component parts of Church, Hall, and Green into a combined resource.

Church Extension

A modern extension to the North West corner of the church. This will provide new toilets, a multi-purpose lobby space and a kitchenette. A new multi-functional room completes the design, providing a separate and fully accessible room for all. The design ensured that the existing stained-glass windows to the North West corner of the church were not compromised.

The construction will incorporate traditional high quality sandstone masonry with a modern comfortable interior. The main room will have full height double glazing with electronic blinds to provide privacy from both internal and external perspective.

A green roof will form part of the extension's "Green" credentials together with a feature arched rooflight above the lobby space to provide a bright and airy interior. Further eco-friendly elements are incorporated via the heating and electrical installation.

Access to the extension will be provided both through the church and independently of it. A proprietary glass door to be installed within the existing (unused) North doorway will provide the link between the existing nave of the church and the new extension. This will create a transitional space between the beautiful and traditional architecture of the main church, and the modern extension.

Community Hall

Extensive remodelling of the parish hall which will afford full modernisation, greater functionality and flexibility for multi-use, by creating better and more independent use of the space available and eliminating sound transmission between rooms.

The design includes two separate Hall areas to the ground floor, and a further large meeting room to the first floor. This will be sealed from the ground floor creating full acoustic separation.

A professionally fitted kitchen is centrally located to cater for all areas or independently for one. A simple kitchen area is also located in the secondary hall. All toilet areas will be relocated and upgraded from current, again allowing access from all areas.

New conservation rooflights will replace the existing single glazed units, and secondary glazing added to improve insulation. The Main East gable window will be fully refurbished. Lighting will be LED and IT facilities will be incorporated.

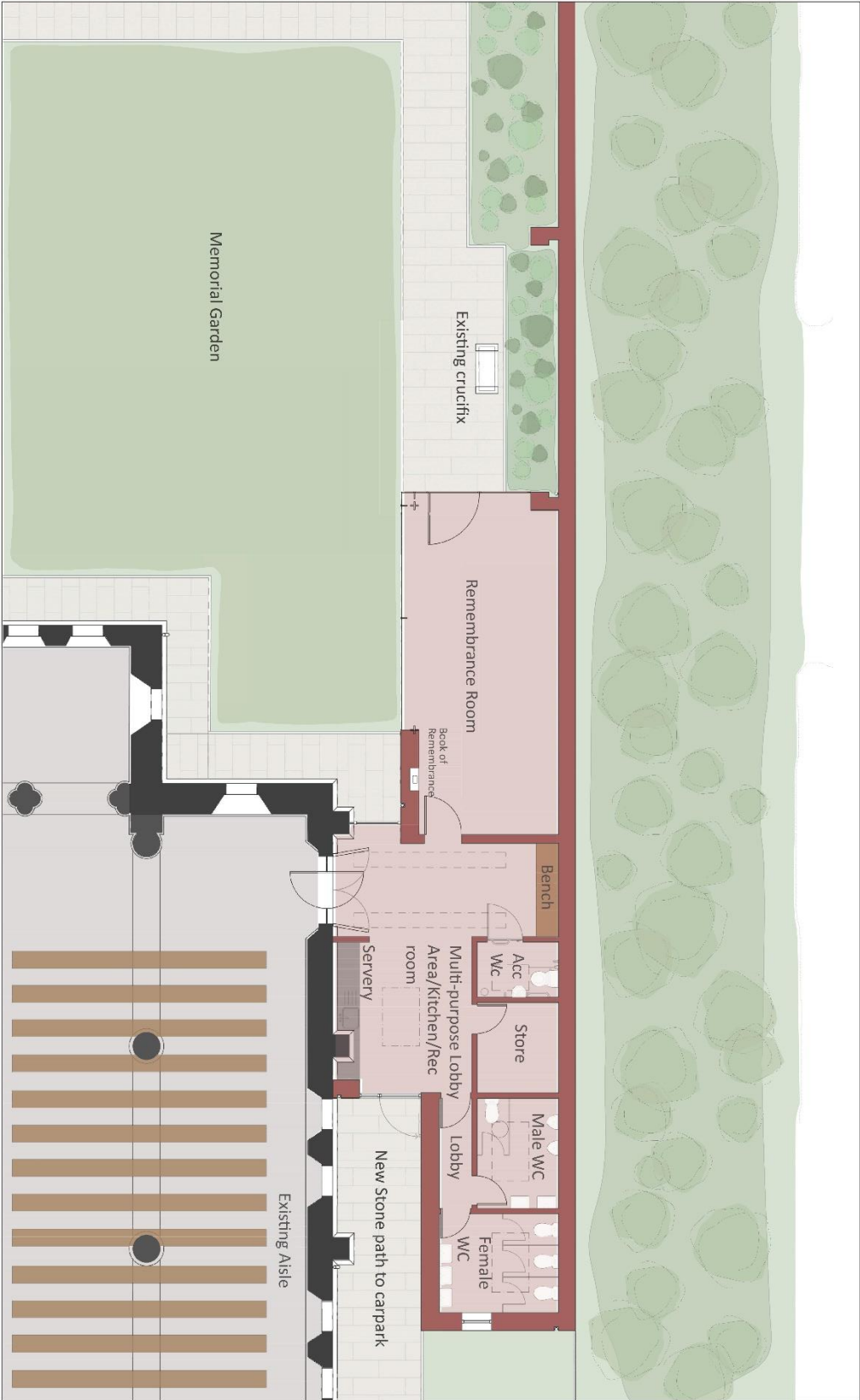
Level access will be provided for all to ensure accessibility. A new door leading from the secondary hall will give onto an enclosed green area on the south side.

From ongoing discussions and re-evaluation, the final design may incorporate further amendments to ensure the very best use of space for all end users within the overall blueprint of the building.

The Grounds

The church green and its surroundings will be subtly re-ordered, and parking areas enhanced.

Proposed plan of Church Extension



St George's Church, Jesmond

Simpson and Brown

St George's Church, Jesmond - Landscape Strategy



Proposals

① Remove stone wall and ramped paving to the existing Hall entrance, and clean down the existing steps (assumed to exist below the raised paving); new paving to the existing and new entrances to the Hall.

② Retain the tree and garden to the south of the Hall including additional planting garden to the south of the Hall adjoining the new door.

Proposals included in future application

③ Lighting fitting on the existing stone column at the north eastern corner of The Green matching that on the north western corner (a service duct exists under the adjoining road).

④ Metal rail, dwarf wall, end pilaster, etc. to the entrance to The Green (coming from Lindisfarne Road) to match the adjoining existing rail surround to The Green. See photograph 1.

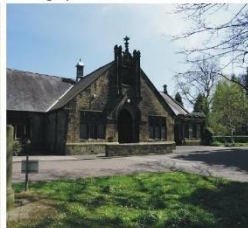
⑤ Removal of the existing notice boards; new signage to the Church and Hall.

⑥ Extend the bulb planting to The Green.

Photograph 1



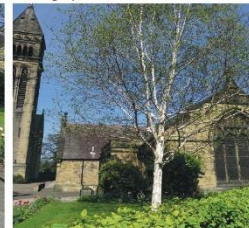
Photograph 2



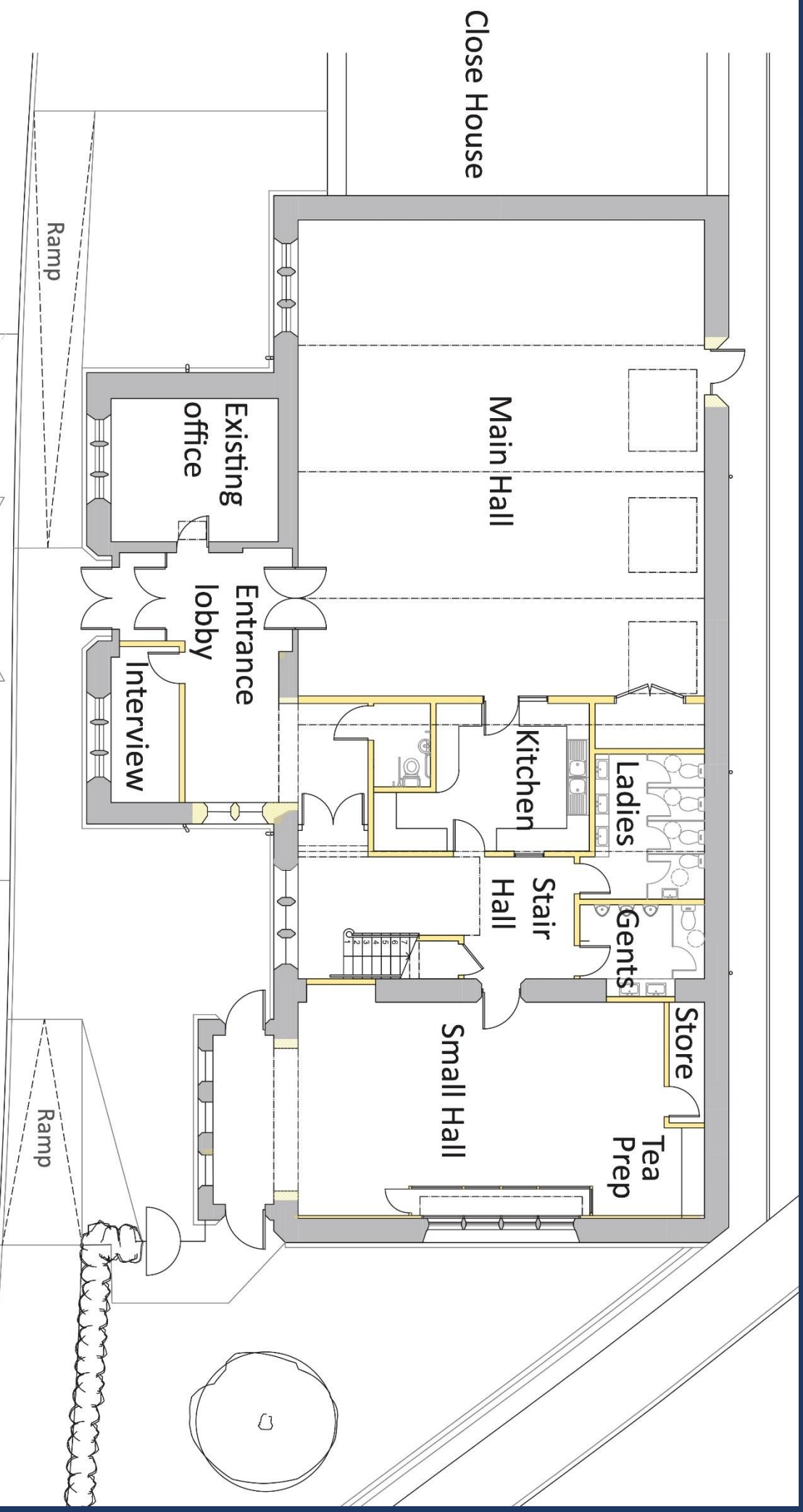
Photograph 3



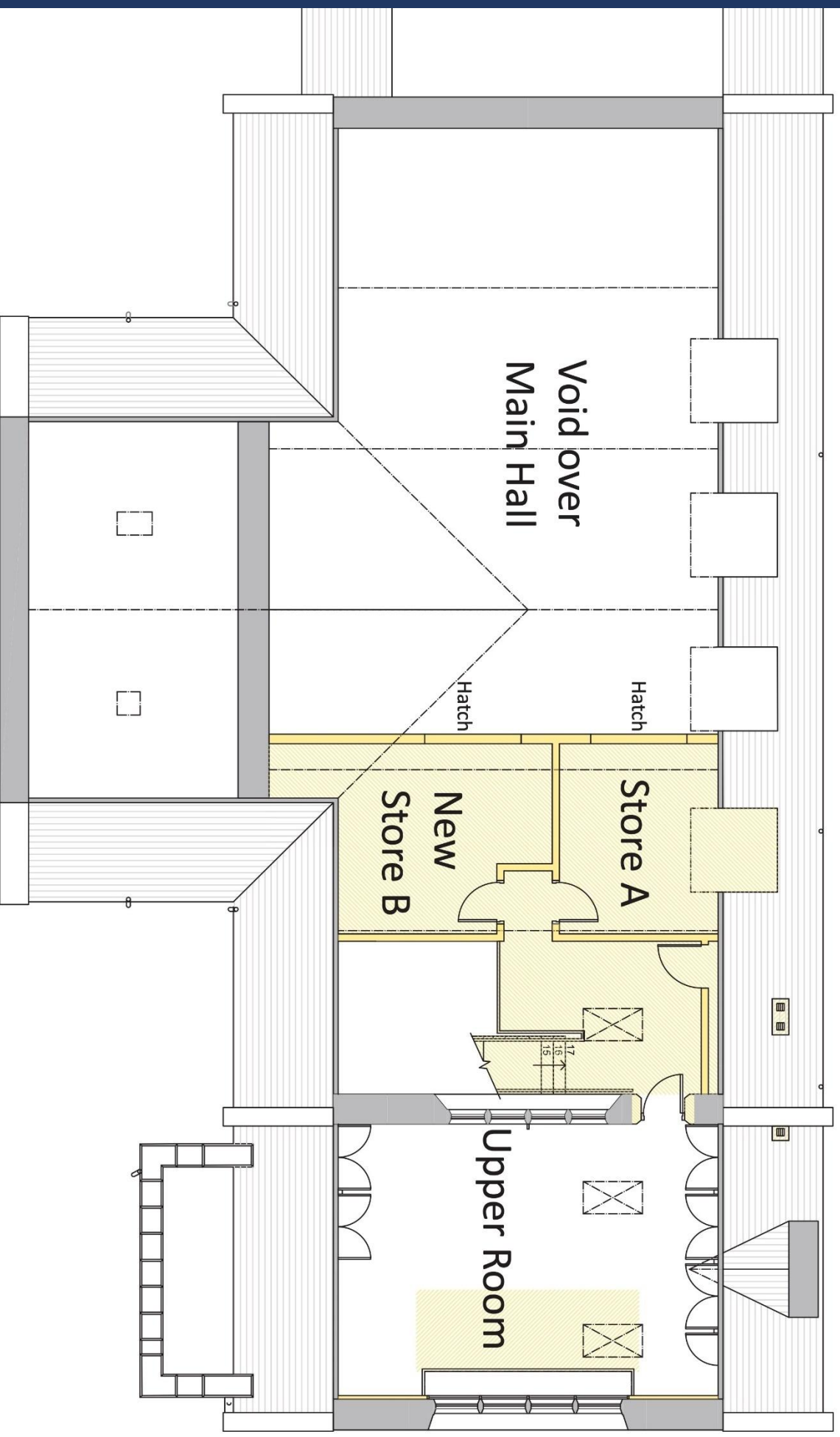
Photograph 4



Ground Floor Plan of Hall (new)



First Floor Plan of Hall (new)



Friday Café



The Panto Band entertains

Community Benefits

The church extension, with toilets, a kitchen and a separate meeting room, will transform the Church into a venue for meetings, concerts, broadcasts, exhibitions and recordings, for those of all faiths and none. The meeting room will have entrances both through the church and independently, delivering value as a stand-alone community facility, providing a modern and flexible space for many different uses.

The Hall will be refurbished and reconfigured so that each room is sound-proofed and has independent access to the toilets and kitchen; one room will also have direct access to an enclosed green space for toddlers and young children. All rooms will have wireless internet, presentation facilities and sufficient power sockets to allow flexibility of use.

The Green will be improved to enhance child safety and its utility for the community of Jesmond. Parking on the east side of the church will be upgraded.

All the facilities will be eco-friendly, including LED lighting, recycling facilities, and improved biodiversity on site.



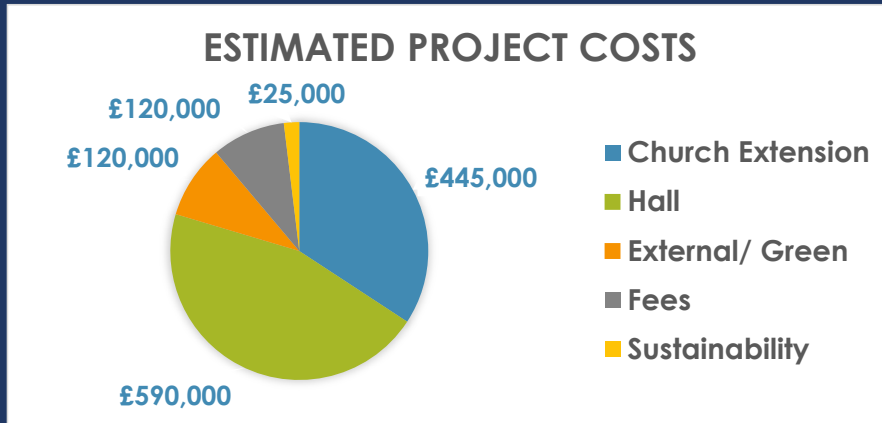
Pendulums concert
in the church



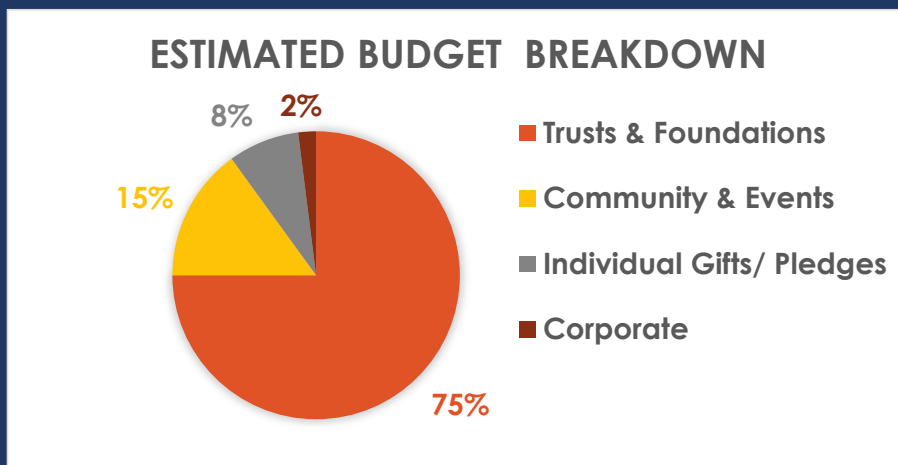
Little Saints
Baby & Toddler Group

Costs & Timeline

The total estimated cost is £1,300,000:



Estimated budget breakdown by funding source:



Target timeline:





Kelly Hendry School of Irish Dance
Perform at the Spring Fair



Friday Singing Group

Fundraising Events

for your Diary

March 10th
Lecture, 7:30pm

By Prof. Saunders on Yevgeny ZAMYATIN, Russian writer of the first dystopian novel, who lived in Jesmond.

April 22nd
Marmalade

A coach trip to visit the World's Original Marmalade Festival at Dalemain, Cumbria

May 19th
Wine Tasting

'Call My Quaff' Wine Tasting competition hosted by David Harker, Newcastle Wine School

Summer
Antiques

An Antiques Event hosted by Stephen Moore, ceramics expert for Antiques Roadshow

Autumn
Ceilidh

Celebrate our Celtic heritage at the Tyneside Irish Centre with the celebrated band of Tony Corcoran

November
Michael Chaplin

An Evening with the author, historian and scriptwriter ('Tommies', 'Foyle's War' and 'Monarch of the Glen')

December 6th
Dickens

'Dickens in Newcastle' Lecture and readings by local actor, historian and writer Dr. Chris Goulding. Festive food and drink!

January 2024
Burns Supper

Spring 2024
Elvis

Elvis: the Gospel Playbook. With Cornwall's inimitable Johnny Cowling. A joint event with the Organ Restoration Project

Big Friendly Jubilee Gathering



Dance at the Big Friendly Jubilee Gathering

Want to help?

Donations to the Community Hub

You can make a pledge to give, by filling in the enclosed pledge and gift aid forms.

You can go online and donate via '[Give a Little](#)'. Or use your phone to scan this QR code:



You can make a bank transfer to PCC St. George; sort code 30-93-55; account number 01584491. Please use 'Community Hub' as the reference and let us know by emailing communityhub@stgeorgesjesmond.org.uk

Time & Talents

It would be great if you could get involved to make this a success, but that doesn't need to be a huge time commitment. Could you help with:

IT skills/ Administration

Typing data into our website

Distributing e-newsletters, creating social media posts etc

Fundraising

Organising a fundraising event

Be part of a team organising an event?

Take part in a sponsored event not run by the team e.g. a run/ cycle/ swim?

Personalise template bids for companies/ trusts

Promote the project within your workplace or group

Communications

Designing posters, leaflets etc

Writing/ proof reading newsletters

Hospitality & Set-up Team

Welcoming people to events

Make, bake & serve refreshments

Logistical help shifting chairs and tables

Technical help with sound and projection

Creativity

Taking photos, making art or crafts

Steering Team

Experienced or knowledgeable about fundraising and community projects, well-connected and interested in making our Jesmond community even better? Join the team!

Are you, your group or business interested in using the facilities?

If you have skills that you'd like to share, or feel you can help in any way, please complete the loose sheet in this booklet and hand it in, or contact the fundraising group on communityhub@stgeorgesjesmond.org.uk. You can scan the QR code to start an email on your phone.



THANK YOU!



Fundraising Campaign

Our Vision is to create:

A Shared Space in the Heart of Jesmond

by transforming St. George's Hall, Church and Green to create a Community Hub

For more details:

see our website, <https://stgeorgesjesmond.org.uk/>

Donate via:

our Community Hub '[Give a Little](#)' campaign, or use this QR code:

Contact us:

communityhub@stgeorgesjesmond.org.uk



THANK YOU!